

MedTECH Manchester Medical Technology Development Centre



The MedTECH Centre offers a unique array of flexible facilities enabling your early stage medical technology company rapidly to develop your business proposition. The Centre offers the opportunity to locate your business within a facility dedicated to the specific needs of companies operating in the MedTECH sector. The bespoke services available to support your company will help accelerate the time to get your new products/services into the marketplace.

MedTECH Specifications

- Services and facilities to support MedTECH companies
- Located on the ground floor of Rutherford House, Manchester Science Park
- Units have access to **msp's** broadband network infrastructure
- 24/7 operation with computer controlled building access system
- Office accommodation to suit 2, 3 or 4 people
- Hot-desk and rent-a-desk facilities
- Office services available by arrangement

MedTECH tenants benefit from business development support including:

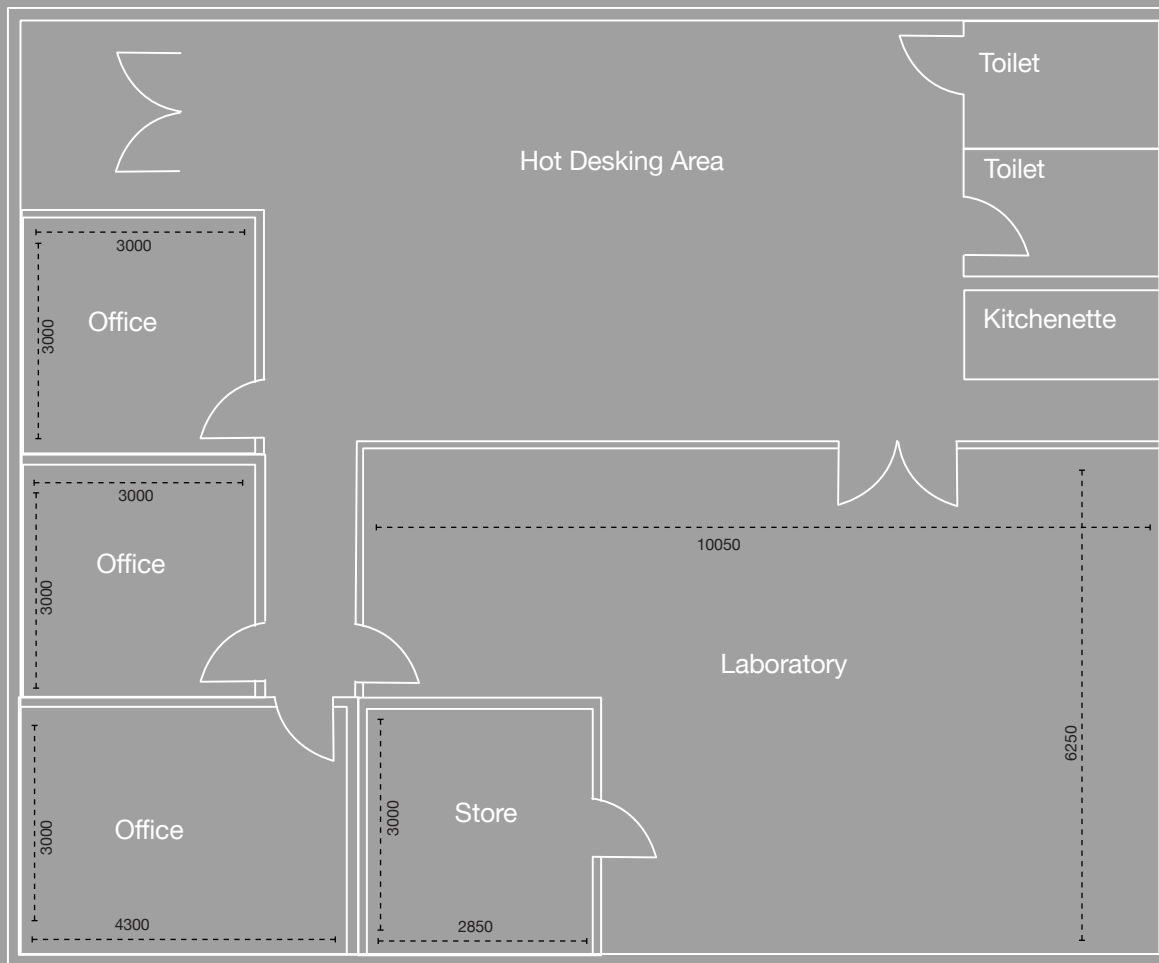
- Access to manufacturing and design facilities
- Colocation with Medilink Northwest
- Access to University facilities and expertise
- Free PR and business development services
- Business networking including free seminars and workshops

Site Facilities

- Adjacent to the largest Clinical Academic Campus in Europe
- Access for evaluation and testing
- Nine miles from Manchester International Airport
- One mile to Oxford Road train station and city centre amenities
- Bus routes, shops and restaurant within easy walking distance
- Café and refreshment areas on site
- Pleasant landscaped environment with bicycle racks outside all buildings
- Site based security guard 24/7, with site wide CCTV coverage
- Good car parking for staff and visitors
- Full disabled access to all buildings and facilities
- Convenient fault reporting and meeting room booking via online intranet
- Access to University of Manchester amenities including internal mail system, library, catering and sports facilities
- Range of office services available including secure storage, post room, 'drop-in' office and fully equipped meeting rooms for hire by the hour

Floor Plan:

MedTech



The MedTECH Centre is phase 1 of an exciting new development, which will transfer in 2012 to the Manchester Science and Innovation Centre located in the renovated Royal Eye Hospital on the Manchester Clinical Academic Campus.

The MedTECH Centre has been established specifically to enable medtech business start-ups to develop products and services in an environment focussed on the healthcare marketplace.

The centre is operated by a partnership of TrusTECH - the NW NHS Innovation Service; Central Manchester University NHS Foundation Trust – the clinical partner and Manchester Science Parks, providing the operational environment for the MedTECH Centre.

Companies located in the Centre have the option of low cost start up with flexible arrangements to enable their company to grow dynamically, supporting their changing requirements as they grow.

We know that access to clinical trials and evaluations facilities often hampers rapid entry to the marketplace. The Centre will have staff experienced in the MedTech sector, with Medilink NW and the hospital site adjacent to the Centre. Assistance from TrusTECH and Central Manchester Hospitals will provide access to key opinion leaders, facilities for trials/evaluations together with procurement, market and regulatory advice.

For further information, please contact:

Jane Davies, Chief Executive, Manchester Science Park Ltd,
Kilburn House, Lloyd Street North, Manchester M15 6SE

t: 0161 226 1000

f: 0161 226 1001

e: enquiries@m脾pl.co.uk

www.manchesterscienceparks.co.uk

m脾pl
manchester | science parks

Property Misdescriptions Act 1991 – These particulars have been prepared with due care and attention, but are intended as a guide to supplement an inspection or survey. Their accuracy is not guaranteed. Accordingly there shall be no liability as a result of any error or omission in the particulars or other information given.

Registered in England, No. 1717239 VAT Reg No. 510 181304
Registered Office Kilburn House, Lloyd Street North Manchester M15 6SE